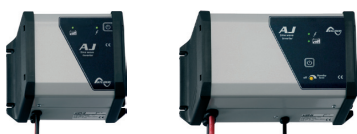


AJ serie



Model	AJ 275-12	AJ 350-24	AJ 400-48	AJ 500-12	AJ 600-24	AJ 700-48	
Inverter							
Nominal battery voltage	12V	24V	48V	12V	24V	48V	
Input voltage range	10.5 – 16V (24V max.)	21 – 32V (44V max.)	42 – 64V (64V max.)	10.5 – 16V (24V max.)	21 – 32V (44V max.)	42 – 64V (64V max.)	
Continuous power @ 25°C	200VA	300VA	300VA	400VA	500VA	500VA	
Power 30 min. @ 25°C	275VA	350VA	400VA	500VA	600VA	700VA	
Power 5 min. @ 25°C	350VA	500VA	600VA	575VA	675VA	900VA	
Power 5 sec. @ 25°C	450VA	650VA	1000VA	1000VA	1200VA	1400VA	
Maximum asymmetric load	150VA	150VA	200VA	250VA	300VA	300VA	
Max. efficiency (%)	93%	94%	94%	93%	94%	94%	
Cos φ max.	0.1 – 1 up to 200 VA	0.1 – 1 up to 300 VA	0.1 – 1 up to 300 VA	0.1 – 1 up to 400VA	0.1 – 1 up to 500VA	0.1 – 1 up to 500VA	
Detection of the load	2W (only with the solar option -S)			Adjustable: 1 → 20W			
Current of short-circuit 2 sec. (exit)	2.3A (4.6A*)	3.2A (6.4A*)	4.6A (9.2A*)	5.2A (10.4A*)	5.7A (11.4A*)	7A (14A*)	
Output voltage	Sine wave 230Vac (120Vac*) 0 / - 10%						
Frequency	50Hz (60Hz*) ± 0.05% (crystal controlled)						
Distortion THD (resistive load)	< 5% (@ Pnom.)						
Consumption Stand-by	0.3W**	0.5W**	1.1W**	0.4W	0.6W	1.5W	
Consumption «ON» no load	2.4W	3.5W	5.2W	4.6W	7.2W	12W	
Overheat protection (+/-5°C)	Shut down @ 75°C - Auto-restart @ 70°C						
Overload and short circuit protection	Automatic disconnection with 2 time restart attempt						
Reverse polarity protection	Protected by internal fuse						
Deep discharge battery protection	Shut off @ 0.87 x Unom - Automatic restart @ Unom						
Max. battery voltage	Shut off @ >1.33 x Unom - Automatic restart @ < Umax						
Acoustic alarm	Before low battery or overheating disconnection						
General data							
Weight	2.4 kg	2.6 kg		4.5 kg			
Dimensions	142mm x 163mm x 84mm			142mm x 240mm x 84mm			
Protection index IP	IP 30 conforms to DIN 40050						
Certification ECE-R 10 (E24)	•	•	Not available	•	•	Not available	
EC conformity	EN 61000-6-1, EN 61000-6-3, EN 55014, EN 55022, Dir. 89/336/EEC, LVD 73/23/EEC						
Operating temperature	-20°C up to +50°C						
Relative humidity in operation	95% without condensation						
Ventilation forced	From 45°C ± 5°C						
Acoustic level	< 45 dB (with ventilation)						
Warranty	2 years						
Approximate correction of Pnom	-1.5%/°C since +25°C						
Recommended battery capacity	> 5 x Pnom/Unom (recommended value in Ah)						
Length cables (Battery/left AC)	1.2m / 1m			1.5m / 1m			
Options	AJ 275-12-S	AJ 350-24-S	AJ 400-48-S	AJ 500-12-S	AJ 600-24-S	AJ 700-48-S	
Solar regulator	Voltage max.	25V	45V	90V	25V	45V	90V
	Current max.	10A			15A		
	Principle	Floating 3 stages (I/U/UO)					
	Absorption voltage	14.4V	28.8V	57.6V	14.4V	28.8V	57.6V
	Floating voltage	13.6V	27.2V	54.4V	13.6V	27.2V	54.4V
Plug for remote control (RCM)	•	•	•	•	•	•	

* 120Vac/60Hz on request

** Standby with solar option -S

Data may change without any notice.

AJ serie



Model	AJ 1000-12	AJ 1300-24	AJ 2100-12	AJ 2400-24	
Inverter					
Nominal battery voltage	12V	24V	12V	24V	
Input voltage range	10.5 – 16V (24V max.)	21–32V (44V max.)	10.5 – 16V (20V max.)	21–32V (40V max.)	
Continuous power @ 25°C	800VA	1000VA	2000VA	2000VA	
Power 30 min. @ 25°C	1000VA	1300VA	2100VA	2400VA	
Power 5 min. @ 25°C	1200VA	2000VA	2450VA	2800VA	
Power 5 sec. @ 25°C	2200VA	2800VA	5000VA	5200VA	
Maximum asymmetric load	500VA	600VA	1000VA	1200VA	
Max. efficiency (%)	93%	94%	92% @ 300VA	94% @ 300VA	
Cos φ max.	0.1 – 1 up to 800VA	0.1 – 1 up to 1000VA	0.1 – 1 up to 2000VA	0.1 – 1 up to 2000VA	
Detection of the load	Adjustable: 1 → 20W				
Current of short-circuit 2 sec. (exit)	10A (20A*)	13A (26A*)	26A (52A*)	30A (60A*)	
Output voltage	Sine wave 230Vac (120Vac*) 0 / -10%				
Frequency	50 Hz (60Hz*) ± 0.05% (crystal controlled)				
Distortion THD (resistive load)	< 5% (@ Pnom. & Uin nom.)			< 3% (@ Pnom & Uin nom.)	
Consumption Stand-by	0.7W	1.2W	0.7W	1.2W	
Consumption «ON» no load	10W	13W	16W	16W	
Overheat protection (+/-5°C)	Shut down @ 75°C - Auto-restart @ 70°C				
Short circuit protection	Automatic disconnection with 2 time restart attempt				
Reverse polarity protection	Protected by internal fuse 125A	Protected by internal fuse 100A	Not protected	Protected by internal fuse 150A	
Deep discharge battery protection	Shut off @ 0.87 x Unom - Automatic restart @ Unom				
Max. battery voltage	Shut off @ >1.33 x Unom - Automatic restart @ < Umax				
Acoustic alarm	Before low battery or overheating disconnection				
General data					
Weight	8.5 kg		19 kg	18 kg	
Dimensions	142mm x 428mm x 84mm		273mm x 399mm x 117mm		
Protection index IP	IP 30 conforms to DIN 40050		IP 20 conforms to DIN 40050		
Certification ECE-R 10 (E24)	•	•	•	•	
EC conformity	EN 61000-6-1, EN 61000-6-3, EN 55014, EN 55022, Dir. 89/336/EEC, LVD 73/23/EEC				
Operating temperature	-20°C up to +50°C				
Relative humidity in operation	95% without condensation				
Ventilation forced	From 45°C ± 5°C				
Acoustic level	< 45 dB (with ventilation)				
Warranty	2 years				
Approximate correction of Pnom	-1.5%/°C since +25°C				
Recommended battery capacity	> 5 x Pnom/Unom (recommended value in Ah)				
Length cables (Battery/left AC)	1.5m / 1m		1.7m / 1m		
Options					
Solar regulator	Voltage max.	25V	45V	25V	45V
	Current max.	25A		30A	
	Principle	Floating 3 stages (I/U/UO)			
	Absorption voltage	14.4V	28.8V	14.4V	28.8V
	Floating voltage	13.6V	27.2V	13.6V	27.2V
Remote control JT8 supplied with 5 m cable	•	•	•	•	

* 120Vac/60Hz on request

Data may change without any notice.