

# PER Series AC Surge Protection (T2type/T2+T2type)

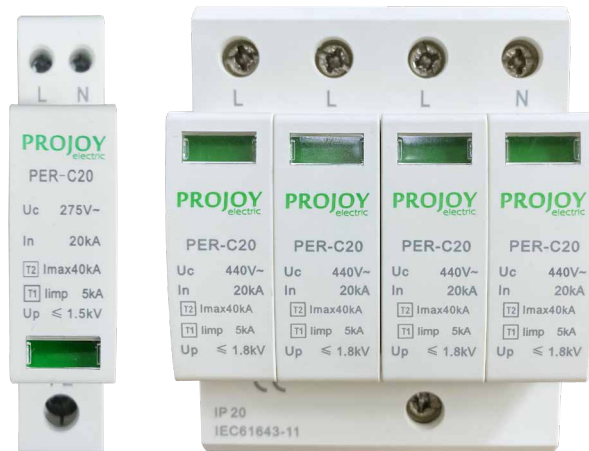
**PROJOY**  
electric

– Switch To Safety! –

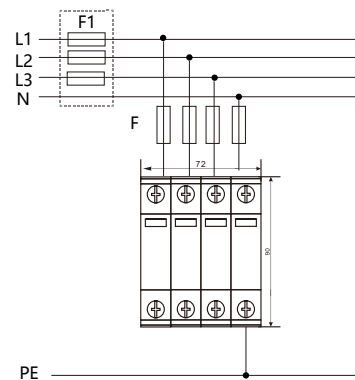
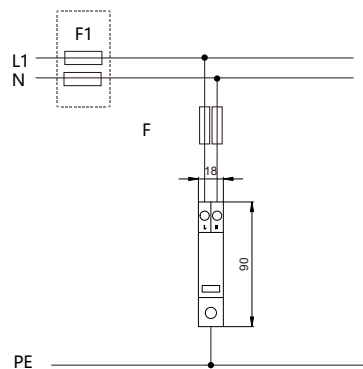
## Features

PER AC surge protector, suitable for AC 50/60 HZ, rated voltage 230/440V three-phase power distribution system, satisfy the SPD, I class and II class test. The peak shock current of the stage I protector is 5kA(10/350 $\mu$ s), and the charge is 25As,II protector maximum discharge current level can up to 100 kA. It can suppress direct strikes, inductive strikes or other instantaneous overvoltages, discharge inrush energy, thus protects system circuits and load equipment. It has the advantages of I or II protection, large discharge capacity, low residual pressure, no leakage current, integrated module structure, easy installation, high safety factor, long service life and so on.

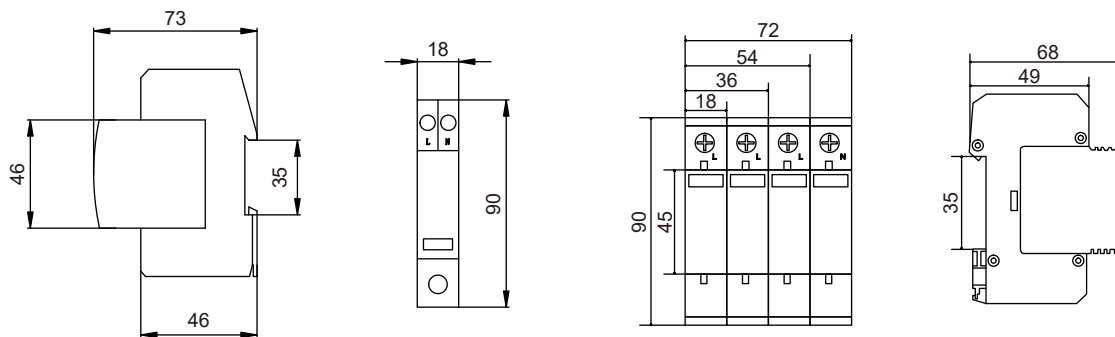
- PER AC surge protector cooperates with each other to realize the layered protection system, so that the low-voltage distribution system can be more widely and effectively protected.
- The surge protector is provided with a fail-safe device. When the protector breaks down due to overheating, the fail-safe detach device can automatically detach from the power grid and give an indication signal. When the protector is normal, the display window will show green, and after failure, the display window will show red.



## Contact Configuration



## Dimensions



## Technical Data

Type	PER-C20			
SPD according	Type 2	Type 1+Type 2	Type 2	Type 1+Type 2
Pole	1P		4P	
Standards compliance	GB/T18802.1-2011 ( IEC61643-1:2005,MOD )			
Max. Continuous Operating Voltage Ucpv	275V AC		440V AC	
Max. Discharge Current I <sub>max</sub>	40kA (8/20μs)			
Nominal Discharge Current I <sub>n</sub>	20kA (8/20μs)			
Impulse current by pole I <sub>imp</sub>	/	5kA (10/350μs)	/	5kA (10/350μs)
Protection level U <sub>p</sub>	1.5 kV		1.8kV	
Response Time t <sub>A</sub>	≤25ns			
Operating Temperature	-40°C ~ 70°C			
Install Traverse Area	16 ~ 25mm <sup>2</sup>			
Housing Material	PA6/PBT UL94 V-0			
Protection Rating	IP20			
Dimensions	When the window displays red, the product is invalid and needs to be replaced.			
Installation dimensions	See outline and mounting dimensions			
Mounting	Symmetrical rail 35 mm			



**PROJOY**  
electric

*— Switch To Safety! —*

**ProJoy Electric Co., Ltd.**

2nd Floor, Building 3, No. 2266, Taiyang Road, Xiangcheng District, Suzhou, China

Tel: +86 512 6878 6489 | Fax: +86 512 6878 6489

Email: [sales@projoy-electric.com](mailto:sales@projoy-electric.com) | [www.projoy-electric.com](http://www.projoy-electric.com)