

**PR40**  
USER MANUAL

PR40 is an extremely long-range USB rechargeable flashlight with max beam throw 1000 meters specially designed for hunting, searching and outdoors. Driven by 2\*18650 or 4\*CR123A batteries, the max runtime can be up to 430 hours. It also features location beacon and battery power level detection functions. With a full range of accessories including red, green, blue and orange filter, gun mount and remote switch, PR40 is ideal for hunting and searching in different environments.

#### Caution

- "Strobe" may cause seizure in persons with photosensitive epilepsy.
- After using a long time, the light will be warm. This is NORMAL and is not a defect.

#### Features

- Max output 1350 lumens with 1\*Cree XP-L HI LED;
- Beam throw up to 1000 meters with optimized optical system;
- Driven by 2\*18650 or 4\*CR123A batteries and max runtime 430 hrs;
- Easy operation with dual switches of tail and side buttons;
- Tactical tail switch provides on/off and momentary-on functions;
- Side switch allows easy access to 4 outputs and 4 hidden functions (Strobe, SOS, location beacon and battery power level detection);
- Memory function (excluding Strobe and SOS);
- Full range of accessories compatible for hunting, including 4 colors of filters, gun mount and remote switch;
- USB rechargeable with charging current of 1A;
- High-strength aerospace aluminum body with HAIII hard anodizing finish for extreme durability;

- Integrated anti-roll housing with removable bezel;
- Mineral optical lens with anti-reflective coating;
- IPX-8 water resistance (2 meter submersible);
- Impact resistance of 1m

#### ANSI Chart

FL 1 STANDARD	HIGH	MEDIUM	LOW	ECO	STROBE	SOS
OUTPUT	1350LM	500LM	150LM	10LM	1350LM	500LM
RUNTIME	1.5h	6h	20h	430h	3h	
INTENSITY	250,000cd					
DISTANCE	1000m(Max)					
WATERPROOF	IPX-8					
IMPACT RESISTANCE	1m					

The above parameters are lab-tested by Fitorch with two 3.7V / 3500mAh 18650 batteries. The data may vary due to different batteries or environments.

#### Specification

- LED: Cree XP-L Hi
- Input: DC5V-12V
- Output: Max 1350 lumen
- Reflector: Precise metal filmed
- Glass: Filmed mineral glass
- Material : HA-III military hard-anodized finish aluminum alloy
- Housing: Premium Type III hard-anodized anti-abrasive finish of black
- Switch: Tail and side switch
- Size:  $\varnothing 25.4 \times \varnothing 50 \times L235\text{mm}$
- Weight: 8 OZ/226.8g (excluding battery)



Website



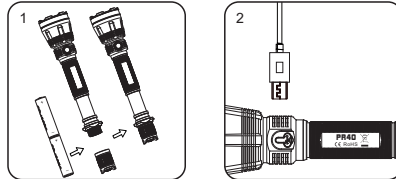
Facebook

**ShenZhen Fitorch Electronics Technology Co., Ltd**  
Office Address: 6F, Longsheng Commercial Building  
Dalang St, Longhua new district  
ShenZhen City, China  
Tel: +86-755-2101-3606  
Web: www.fitorchworld.com  
E-mail: info@fitorchworld.com



#### Manual

- **Battery Installation**  
Insert 2\*18650/4\*CR123A/4\*16340 as illustrated.
- **On/Off**  
Click the tail switch for ON, click again for OFF.
- **Different Outputs Switching**  
When the light is on, short press the side switch for 4 different outputs with cycle of turbo-high-mid-low-mid-high-turbo.
- **Strobe and SOS Activation**  
When the light is on, double pressing the side switch will activate Strobe. Double pressing again will get access to SOS.
- **Power Level Detection**  
Press and hold the side metal switch, then click the tail switch, the LED indicator in the side switch will blink Green and Red. Each blink in green indicates 1.0 volt and red indicates 0.1 volt. For instance, if your battery level is 3.8 volts, the indicator will blink in green for 3 times and in red for 8 times.
- **Location Beacon**  
When the light is on, quick pressing the side switch for 4 times, the LED indicator in the side switch will blink every two seconds for easy recognition in darkness. Press the side switch, the light will go to low output.



#### Charging the Flashlight

- Plug the USB side of charging cable into an adaptor, PC/laptop or power bank. Then open the black rubber cover and plug the Micro USB side of the charging cable into the port. The indicator in side switch will blink in green when charging and stay in green when fully charged. The max charging current is 1A;
- Once charging is finished, be sure to close the anti-dust cover;
- If emergency lighting is needed during charging, the light can be used on low output;
- Recharge a stored PR40 every four months to maintain optimum battery performance.

#### Accessories

- **Included for Free:** 2\*2600mAh 18650 battery with USB port, USB cable, holster, lanyard, tail cap, O-ring, 4 colors of filters (red, green, blue and orange)
- **Optional:** Gun mount, remote switch

#### Battery

Rechargeable Li-on battery	2*18650	3.7V
Rechargeable Li-on battery	4*16340	3.7V
Lithium	4*CR123A	3.0V

#### Store and maintenance

- Disassembling the sealed head will damage the lights and void the warranty.
- High quality batteries are recommended;
- Long-term use can result in O-ring wear. To maintain a proper watertight seal, please replace the O-ring with the spare one included in the package in time;
- Remove the batteries if the light will not be used for a long time;
- Store and keep the light from fire, statics, steaming and humidity surroundings;
- Clean the body with soft fabric clothing and lubricate the thread with silicon grease every 6 months;
- Clean the battery contacts periodically to keep the flashlight performance as dirty contacts may cause flicking, shining intermittently or even fail of work for below factors.  
A: Battery need replacing ( choose the battery which mentions on this manual)  
B: PCB, spring or other contacts become dirty. Please clean the contacts with a cotton swab soaked in rubbing alcohol.

#### Warranty

- 15 days free replacement: Fitorch will replace a new replacement within 15 days from purchase date for any manufacturing defects happen in normal use. If the model has been discontinued, customers will receive a product with similar or improved model;
- 5 years (60 months) free repairs: Fitorch will offer free repair within 5 years for lights from the date of purchase if problem happen in normal use;
- Limited lifetime warranty: Over 5 years, Fitorch will provide lifetime repairs but charge for parts.

**The free warranty does not cover any damages or failure caused by:**

- Normal wear;
- Rough operation;
- Battery leakage;
- Improper operations;
- Salt water and corrosive damage to the light

Web: www.fitorchworld.com

Web: www.fitorchworld.com

Web: www.fitorchworld.com

Web: www.fitorchworld.com