

PS21k CS-F85-20

Solar Surface Pump System

System Overview

Head	max. 50 m
Flow rate	max. 120 m ³ /h

Technical Data

Controller PS21k

- Control inputs for dry running protection, remote control etc.
- Protected against reverse polarity, overload and overtemperature
- Integrated MPPT (Maximum Power Point Tracking)

Power	max. 19 kW
Input voltage	max. 800 V
Optimum V _{mp} *	> 575 V
Motor current	max. 27 A
Efficiency	max. 98 %
Ambient temp.	-30...50 °C
Enclosure class	IP41

Motor AC DRIVE SF 15kW

- Highly efficient 3-phase AC motor
- Frequency max. 51 Hz

Efficiency	max. 92 %
Motor speed	1.150...2.905 rpm
Power factor	0,87
Insulation class	F
Enclosure class	IP55

Pump End PE CS-F85-20

- Premium materials

Pump Unit PU CS-F85-20 (Motor, Pump End)

Water temperature	max. 70 °C
Suction head	max. 3 m

Standards



2006/42/EC, 2004/108/EC, 2006/95/EC

IEC/EN 61702:1995,
IEC/EN 62253 Ed.1

The logos shown reflect the approvals that have been granted for this product family. Products are ordered and supplied with the approvals specific to the market requirements.

*V_{mp}: MPP-voltage under Standard Test Conditions (STC): 1000 W/m² solar irradiance, 25 °C cell temperature



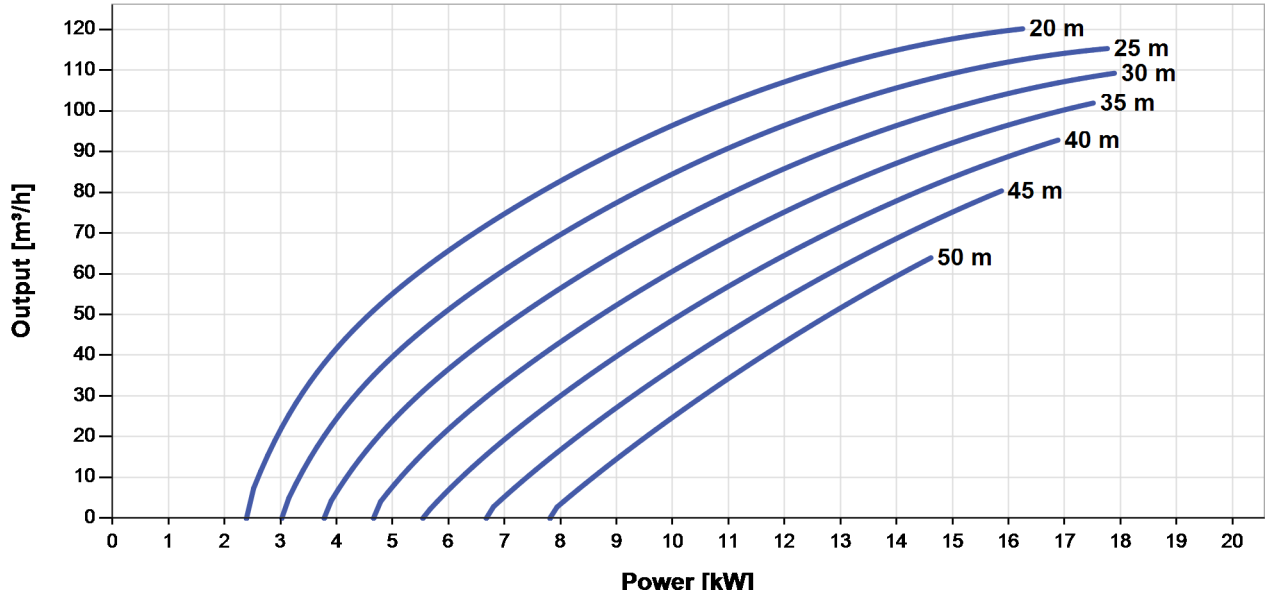
PS21k CS-F85-20



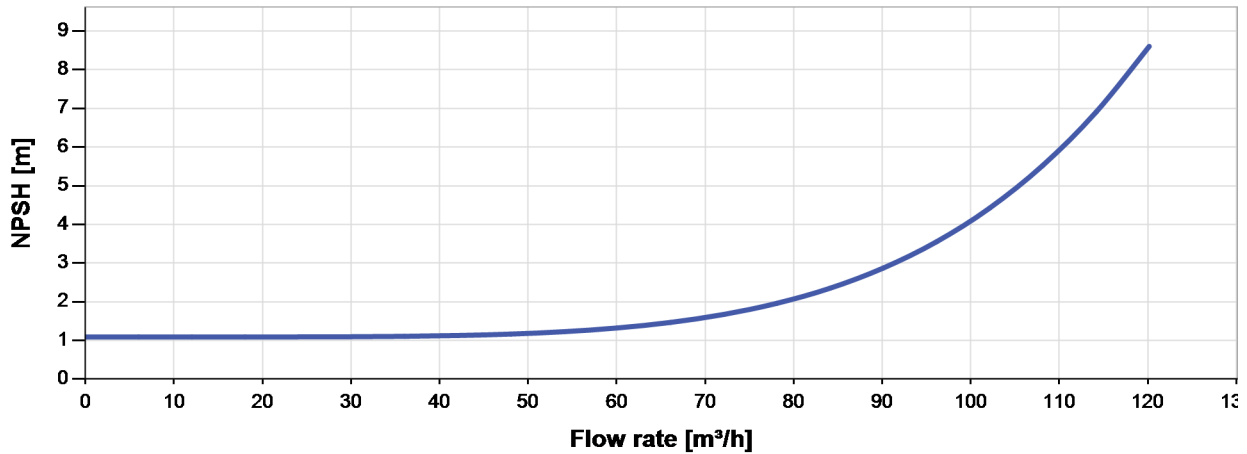
Solar Surface Pump System

Pump Chart

V_{mp}* > 575 V



NPSH



The NPSH (Net Positive Suction Head) is NOT the operating suction head. To calculate the operating suction head please refer to the installation manual.

*V_{mp}: MPP-voltage under Standard Test Conditions (STC): 1000 W/m² solar irradiance, 25 °C cell temperature



PS21k CS-F85-20

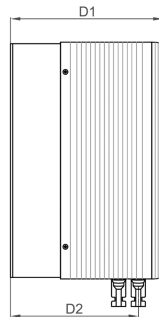
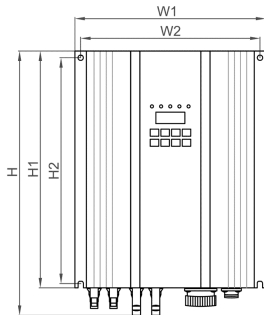


Solar Surface Pump System

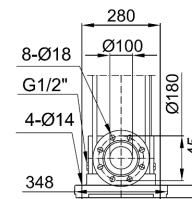
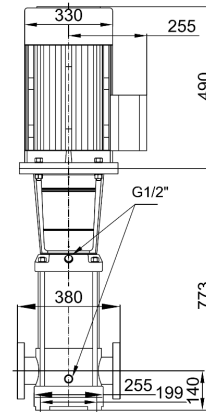
Dimensions and Weights

Controller

H = 350 mm
H1 = 310 mm
H2 = 295 mm
W1 = 250 mm
W2 = 235 mm
D1 = 200 mm
D2 = 167 mm



Pump Unit [mm]



	Net weight
Controller	9,0 kg
Pump Unit	192 kg
Motor	117 kg
Pump End	75 kg

